

Online Biology Major Electives

Spring 2023

Students may only use a course once to satisfy major elective requirements.

Ecology, Evolution & Behavior

ECOL 409—Evolution of Infectious Disease (3-units) (7W2)
ECOL 437—Vertebrate Physiology * (4-units) (7W1)
GEOS 330—Intro to Remote Sensing (3-units) (7W2)
RNR 417—GIS for Natural and Social Science * (3-units) (FULL)



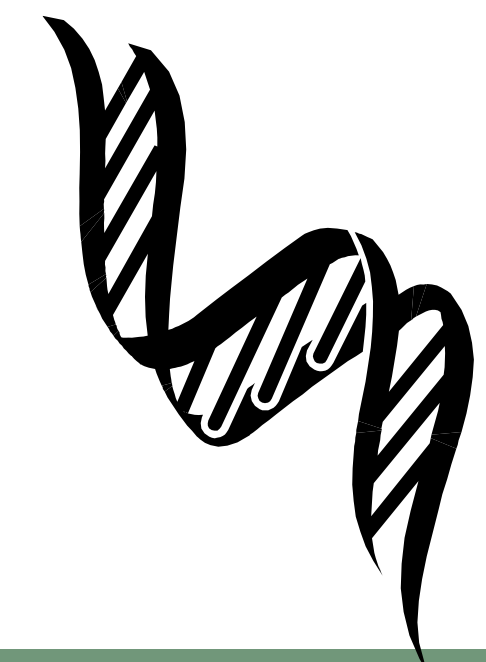
Courses in **BOLD** satisfy the Writing Emphasis requirement.
Courses marked with * satisfy the Lab requirement.

Cell & Molecular Biology

IMB 401—Medical Microbiology & Immunology (3-units) (FULL)
NROS 310—Molecular & Cellular Biology of Neurons (3-4 units) (7W2)

Genetics

ECOL 346—Bioinformatics (4-units) (FULL)



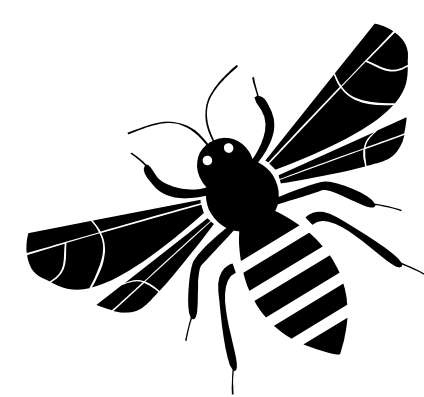
Biology of Organisms

Microorganismal

ECOL 409—Evolution of Infectious Disease (3-units) (7W2)
ENVS 425—Environmental Microbiology (3-units) (7W2)
IMB 401—Medical Microbiology & Immunology (3-units) (FULL)
IMB 402—Medical Microbiology Basics (1-unit) (7W1)
IMB 404—Medical Virology Basics (1-unit) (7W2)

Macroorganismal

ECOL 437—Vertebrate Physiology * (4-units) (7W1)



Physiology

ECOL 437—Vertebrate Physiology * (4-units) (7W1)
PSIO 201—Human Anatomy & Physiology I * (4-units) (7W1)
PSIO 202—Human Anatomy & Physiology II * (4-units) (7W2)

PSIO 201 & PSIO 202 must be taken together to apply towards degree.
Must check upper-division units with advisor if taking this set.

Science & Society

ECOL 409—Evolution of Infectious Disease (3-units) (7W2)
EPID 309—Introduction to Epidemiology (3-units) (FULL)
LAW 459—Public International Environmental Law (3-units) (7W2)
PA 321—Medical Ethics (3-units) (7W1 & 7W2)
PHIL 347—Neuroethics (3-units) (FULL)
PHP 308—Community Health Ed for Disease Outbreaks (3-units) (7W1)

