

EEB & Biology Major Electives

Fall 2024

Organismal

Macro-

ACBS 315 R & L* - Physiology of Reproduction

ACBS 400 A- Animal Anatomy & Physiology A

ECOL 484- Ornithology*

*ECOL 485 - Mammalogy**

ECOL 487 R & L - Animal Behavior

ENTO 415 R - Insect Biology

Micro-

ACBS 329 A - Microbial Diversity

ACBS 427 R - General Mycology

ACBS 449- Diseases of Wildlife

ECOL 407 - Disease Ecology and Evolution

ECOL 409 - Evolution of Infectious Disease

ECOL 410 - Microbial Biogeochemistry and Global Change

ENVS 425 - Environmental Microbiology

MIC 329 A - Microbial Diversity

MIC 427 R - General Mycology

PLS 448 A - Plant Biochemistry and Metabolic Engineering



Ecology, Evolution & Behavior

ECOL 326 - Genomics

ECOL 345- Biodiversity and the Tree of Life

ECOL 407 - Disease Ecology and Evolution

ECOL 409 - Evolution of Infections Disease

ECOL 480- Mathematical Models in Biology

ECOL 487 R & L - Animal Behavior

ENTO 415 R- Insect Biology

ENVS 442 - Limnology *

ENVS 477- Ecotoxicology

GEOS 330- Introduction to Remote Sensing

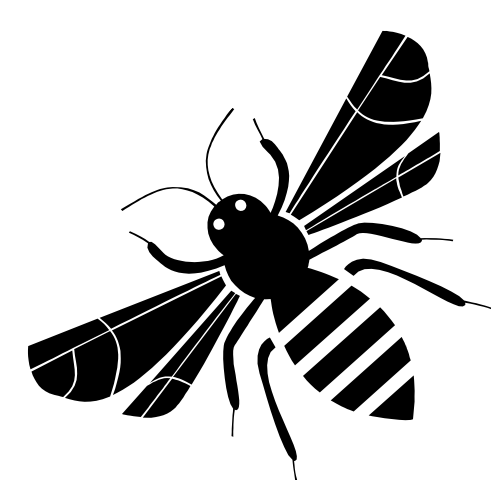
GEOS 478 - Global Change

MIC 329A - Microbial Diversity

RNR 316- Natural Resource Ecology

RNR 355- Introduction to Wildland Fire

WFSC 444 - Wildlife Ecology, Conservation, and Management*



Physiology

ACBS 315 R & L - Physiology of Reproduction

ACBS 400 A- Animal Anatomy & Physiology A

ENTO 401 - Ecological Physiology

MIC 432 - Comparative Immunology

PSIO 380- Fundamentals of Human Psio

PLS 360- Plant Growth & Physiology

PSIO 201 and 202 when taken together can count for this requirement and a lab requirement. Be sure to still complete 42 upper division units when using this option.

Science & Society

ECOL 409- Evolution of Infectious Disease

EPID 309- Intro to Epidemiology

HPS 387- Health Disparities/ Minority Health

LAW 459- Public International Environmental Law

MCB 404- Bioethics

PA 321- Medical Ethics

PHIL 347- Neuroethics

PHP 305- Population Health in Digital Age

PHP 308- Community Health Ed/Disease Outbreaks

Cell & Molecular Biology

ECOL 345- Biodiversity and the Tree of Life

ECOL 326 - Genomics

ENVS 477- Exotoxicology

MCB 325 - Biology of Cancer

MCB 422 - Problem Solving with Genetic Tools*

MIC 350 - Core Concepts in Molecular Microbiology

MIC 419 - Immunology

MIC 420 - Pathogenic Bacteriology

MIC 432 - Comparative Immunology

NROS 430- Neurogenetics

PLS 359 - Plant Cell Structure & Function

PLS 448 A - Plant Biochemistry and Metabolic Engineering

Genetics

ECOL 326 - Genomics

ECOL 345- Biodiversity and the Tree of Life

ECOL 430 - Conservation Genetics

MCB 422 - Problem Solving with Genetic Tools*

MCB 340 - Introduction to Biotechnology

NROS 430 - Neurogenetics



BOLD is writing emphasis, ITALICS are field, * is lab

While some courses are listed in multiple elective categories above, you may only use a course once within your major electives.

For example if you take ACBS 400B, it will apply for either an organismal **OR** physiology elective—**NOT BOTH**.