

EEB & Biology Major Electives

Spring 2025

Organismal

Macro-

ACBS 400 B- Animal Anatomy & Physiology

ACBS 443– Research Animal Methods *

ECOL 404 R– Biology of the Oceans

ECOL 407– Insect Discovery

ECOL 437– Vertebrate Physiology*

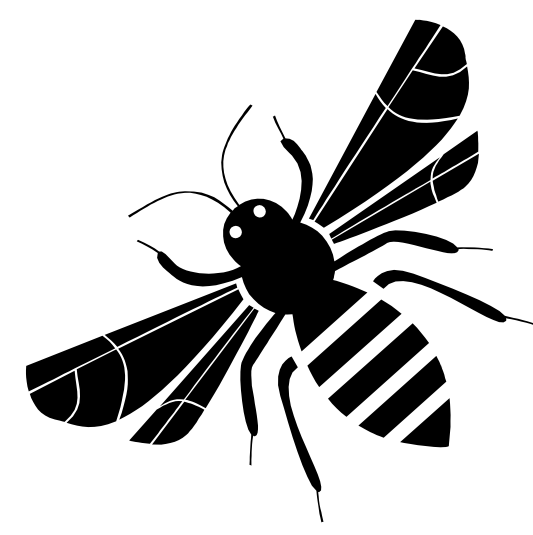
ECOL 480– Math Models in Biology

ECOL 483—Herpetology *

ECOL 484- Ornithology*

ENTO 457– Medical & Veterinary Entomology

PLS 360- Plant Growth and Physiology



Micro-

ACBS 403 R– Biology of Animal Parasites

ACBS 406- Diseases of Companion Animals

ECOL 409– Evolution of Infectious Disease

ENTO 457—Medical-Veterinary Entomology

MIC 328 R – Microbial Physiology

MIC 425– Environmental Microbiology

PLP 428R—Microbial Genetics

PLP 428L– Microbial Genetics Lab*

Ecology, Evolution & Behavior

ANTH 495D– Special Topics in Biology Anthropology

ECOL 346– Bioinformatics*

ECOL 360– Marine Ecology and Conservation

ECOL 404 R– Biology of Oceans

ECOL 406 R– Conservation Biology

ECOL 409– Evolution of Infectious Disease

ECOL 412 A- Ocean Science

ECOL 412 B– Ocean Science Field Course

ECOL 426– Population Genetics

ECOL 427—Ecology and Evolution of the Mammalian Microbiome

ECOL 454—Water Harvesting

ECOL 473– Topics in Behavioral

ECOL 480– Mathematical Models in Biology

ECOL 496 G– Complex Systems: Networks & Self Organization in Biology

ECOL 484– Ornithology*

ENTO 407—Insect Discovery

ENVS 477– Ecotoxicology

ENVS 475– Freshwater and Marine Algae

GEOS 330– Introduction to Remote Sensing

RNR 316– Natural Resource Ecology

RNR 355– Introduction to Wildland Fire

WFSC 445– Population Ecology

WFSC 447– Wildlife Conservation Behavior

WFSC 454– Water Harvesting



Physiology

ACBS 400 B- Animal Anatomy & Physiology

ECOL 437– Vertebrate Physiology*

MCB 360– Plant Growth and Physiology

MIC 328 R – Microbial Physiology

NROS 307—Cellular Neurophysiology

PSIO 380– Fundamentals of Human Psio

PLS 360– Plant Growth & Physiology



PSIO 201 and 202 when taken together can count for this requirement and a lab requirement. Be sure to still complete 42 upper division units when using this option.

Science & Society

ECOL 360– Marine Ecology and Conservation

ECOL 406 R– Conservation Biology

ECOL 409—Evolution of Infectious Disease

ENTO 457—Medical– Veterinary Entomology

EPID 309– Intro to Epidemiology

HPS 387– Health Disparities/ Minority Health

LAW 459– Public International Environmental Law

MCB 404– Bioethics

PHIL 321– Medical Ethics

PHIL 347– Neuroethics

PHP 305– Population Health in Digital Age

PHP 308– Community Health Ed/Disease Outbreaks

PCOL 320– What’s Your Poison? Toxicology

Cell & Molecular Biology

ENVS 477– Exotoxicology

MCB 411– Molecular Biology

MCB 416 A– Stats Bioinformatics & Genomic Analysis

MCB 433– Medical and Molecular Virology

MCB 473– Recombinant DNA Methods & Applications*

NROS 310– Molecular and Cellular Biology of Neurons

NROS 412– Molecular Mechanisms of Learning and Memory

NROS 430—Neurogenetics

PLP 428R—Microbial Genetics

Genetics

ECOL 346– Bioinformatics*

ECOL 426– Population Genetics

ECOL 427 - Ecology and Evolution of the Mammalian Microbiome

ECOL 428 R– Microbial Genetics

ECOL 496 G– Complex Systems: Networks & Self Organization in Biology

MCB 416 A– Stats Bioinformatics & Genomic Analysis

MCB 473– Recombinant DNA Methods & Applications *

MIC 340– Introduction to Biotechnology

NROS 430—Neurogenetics

PLP 428 R – Microbial Genetics

PLS 312—Plant & Animal Genetics

PLS 340 L– Biotechnology Laboratory *

PLS 449 A– Plant Genetics and Genomics



BOLD is writing emphasis, ITALICS are field, * is lab

While some courses are listed in multiple elective categories above, you may only use a course once within your major electives.

For example if you take ACBS 400B, it will apply for either an organismal **OR** physiology elective—**NOT BOTH**.