

EEB & Biology Major Electives

Spring 2025

Organismal

Macro-

ACBS 400 B- Animal Anatomy & Physiology
 ACBS 443– Research Animal Methods *
ECOL 404 R– Biology of the Oceans
 ECOL 407– Insect Discovery
ECOL 437– Vertebrate Physiology*
 ECOL 480– Math Models in Biology
 ECOL 483—Herpetology *
ECOL 484- Ornithology*
 ENTO 457– Medical & Veterinary Entomology
 PLS 360- Plant Growth and Physiology



Micro-

ACBS 403 R– Biology of Animal Parasites
 ACBS 406- Diseases of Companion Animals
 ECOL 409– Evolution of Infectious Disease
 ENTO 457—Medical-Veterinary Entomology
 MIC 328 R – Microbial Physiology
 MIC 425– Environmental Microbiology
 PLP 320– Microbiomes
PLP 428R—Microbial Genetics
 PLP 428L– Microbial Genetics Lab*

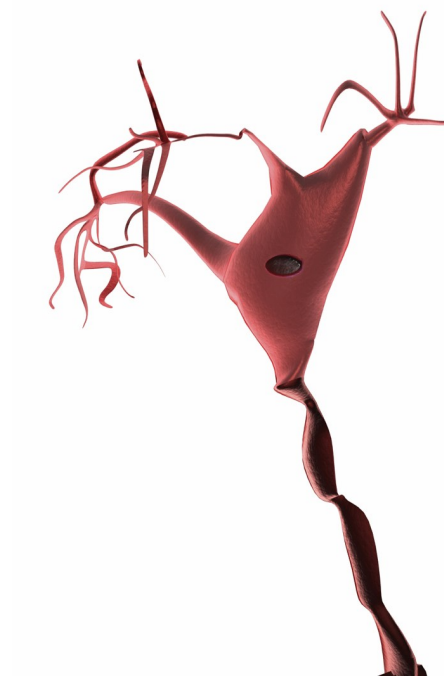
Ecology, Evolution & Behavior

ANTH 495D– Special Topics in Biology Anthropology
 ECOL 346– Bioinformatics*
 ECOL 360– Marine Ecology and Conservation
ECOL 404 R– Biology of Oceans
 ECOL 406 R– Conservation Biology
 ECOL 409– Evolution of Infectious Disease
 ECOL 412 A- Ocean Science
 ECOL 412 B– Ocean Science Field Course
 ECOL 426– Population Genetics
 ECOL 427—Ecology and Evolution of the Mammalian Microbiome
 ECOL 454—Water Harvesting
 ECOL 473– Topics in Behavioral
 ECOL 480– Mathematical Models in Biology
 ECOL 496 G– Complex Systems: Networks & Self Organization in Biology
ECOL 484– Ornithology*
 ENTO 407—Insect Discovery
ENVS 477– Ecotoxicology
ENVS 475– Freshwater and Marine Algae
 GEOS 330– Introduction to Remote Sensing
 RNR 316– Natural Resource Ecology
 RNR 355– Introduction to Wildland Fire
 WFSC 445– Population Ecology
 WFSC 447– Wildlife Conservation Behavior
 WFSC 454– Water Harvesting



Physiology

ACBS 400 B- Animal Anatomy & Physiology
ECOL 437– Vertebrate Physiology*
 MCB 360– Plant Growth and Physiology
 MIC 328 R – Microbial Physiology
 NROS 307—Cellular Neurophysiology
 PSIO 380– Fundamentals of Human Psio
 PLS 360– Plant Growth & Physiology



PSIO 201 and 202 when taken together can count for this requirement and a lab requirement. Be sure to still complete 42 upper division units when using this option.

Science & Society

ECOL 360– Marine Ecology and Conservation
 ECOL 406 R– Conservation Biology
 ECOL 409—Evolution of Infectious Disease
 ENTO 457—Medical– Veterinary Entomology
 EPID 309– Intro to Epidemiology
 HPS 387– Health Disparities/ Minority Health
 LAW 459– Public International Environmental Law
MCB 404– Bioethics
 PHIL 321– Medical Ethics
 PHIL 347– Neuroethics
 PHP 305– Population Health in Digital Age
 PHP 308– Community Health Ed/Disease Outbreaks
 PCOL 320– What’s Your Poison? Toxicology

Cell & Molecular Biology

ENVS 477– Exotoxicology
 MCB 411– Molecular Biology
 MCB 416 A– Stats Bioinformatics & Genomic Analysis
 MCB 433– Medical and Molecular Virology
MCB 473– Recombinant DNA Methods & Applications*
 NROS 310– Molecular and Cellular Biology of Neurons
 NROS 412– Molecular Mechanisms of Learning and Memory
 NROS 430—Neurogenetics
PLP 428R—Microbial Genetics

Genetics

ECOL 346– Bioinformatics*
 ECOL 426– Population Genetics
 ECOL 427 - Ecology and Evolution of the Mammalian Microbiome
 ECOL 428 R– Microbial Genetics
 ECOL 496 G– Complex Systems: Networks & Self Organization in Biology
 MCB 416 A– Stats Bioinformatics & Genomic Analysis
MCB 473– Recombinant DNA Methods & Applications *
 MIC 340– Introduction to Biotechnology
 NROS 430—Neurogenetics
PLP 428 R – Microbial Genetics
 PLS 312—Plant & Animal Genetics
 PLS 340 L– Biotechnology Laboratory *
 PLS 449 A– Plant Genetics and Genomics



BOLD is writing emphasis, ITALICS are field, * is lab

While some courses are listed in multiple elective categories above, you may only use a course once within your major electives. For example if you take ACBS 400B, it will apply for either an organismal **OR** physiology elective—**NOT BOTH**.